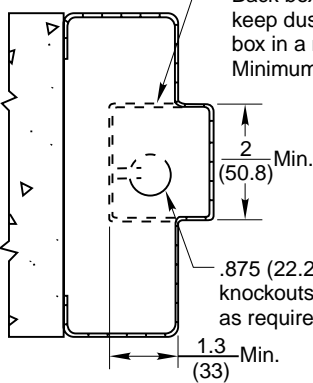


Frame Preparation (RHRB Application Shown)

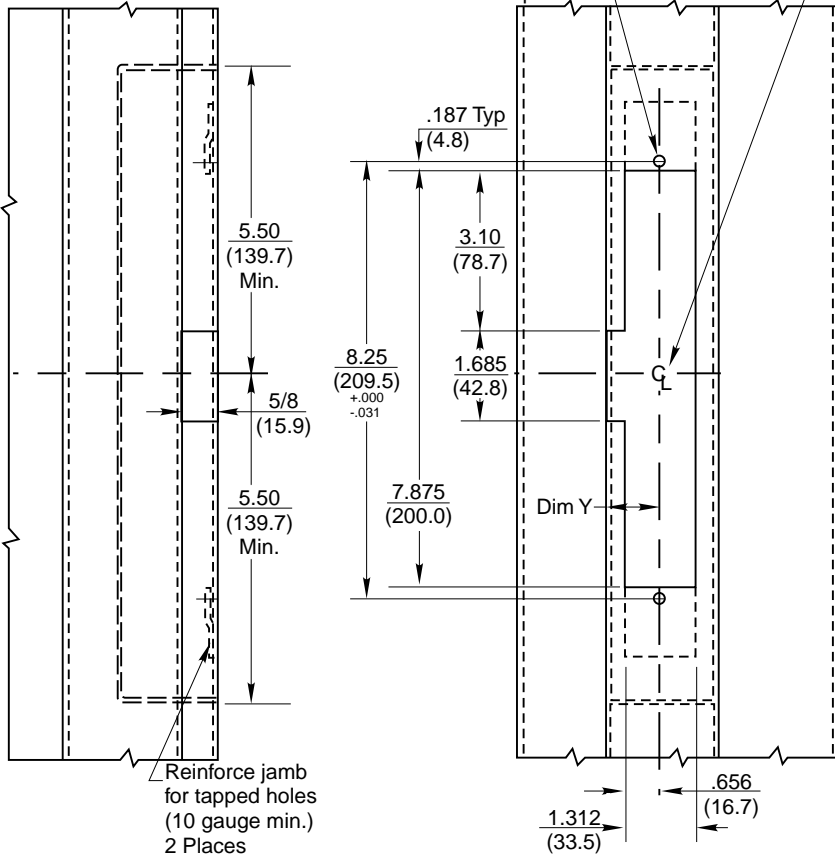
Drawing shows only one method of installation. Method of installation may vary per door & frame manufacturer.

Back box provided by hollow metal manufacturer to keep dust & dirt out of strike pocket. Construct the box in a manner that it will hold its shape. Minimum material thickness 16 gauge.

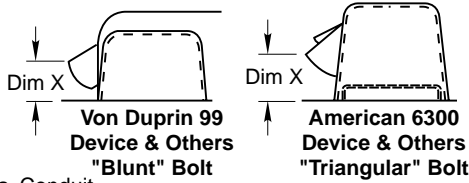


.875 (22.2) Dia. Conduit knockouts to be punched as required.

Align latchbolt & deadlatch with keeper & faceplate/ramp as needed.
#8 DR (.199) Tap 1/4-20 UNC thru 2 places



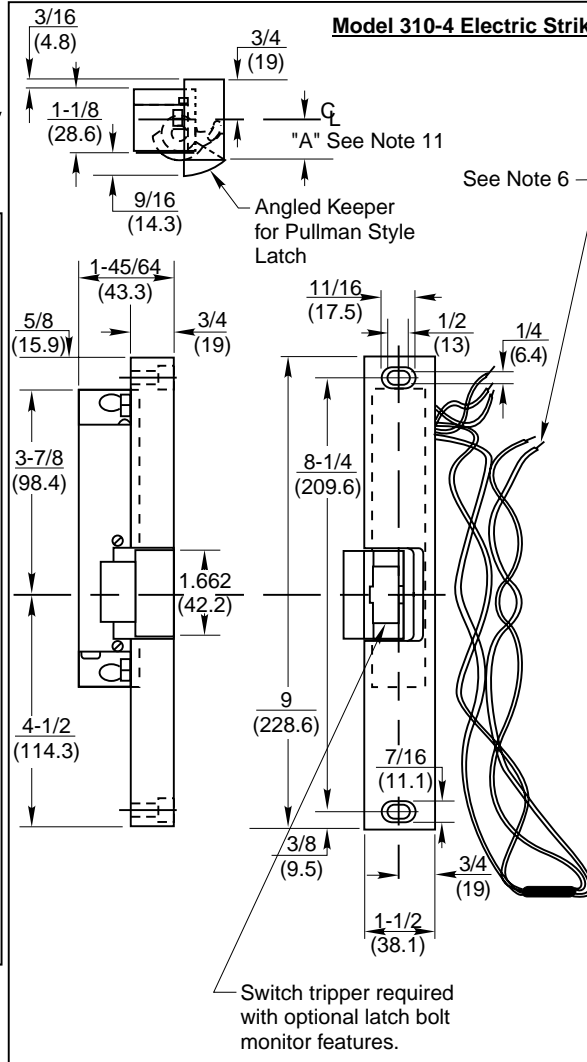
Strike Prep Location Instructions



Device	Dim X From Door	Dim Y Stop Edge
Von Duprin	31/32 (24.6)	31/32 (24.6)
American	1-3/16 (30.2)	1-9/32 (32.5)
Corbin Russwin: ED4200, ED5200	1-3/8 (34.9)	1-3/8 (34.9)
Yale: 2100, 7000	1-3/8 (34.9)	1-3/8 (34.9)

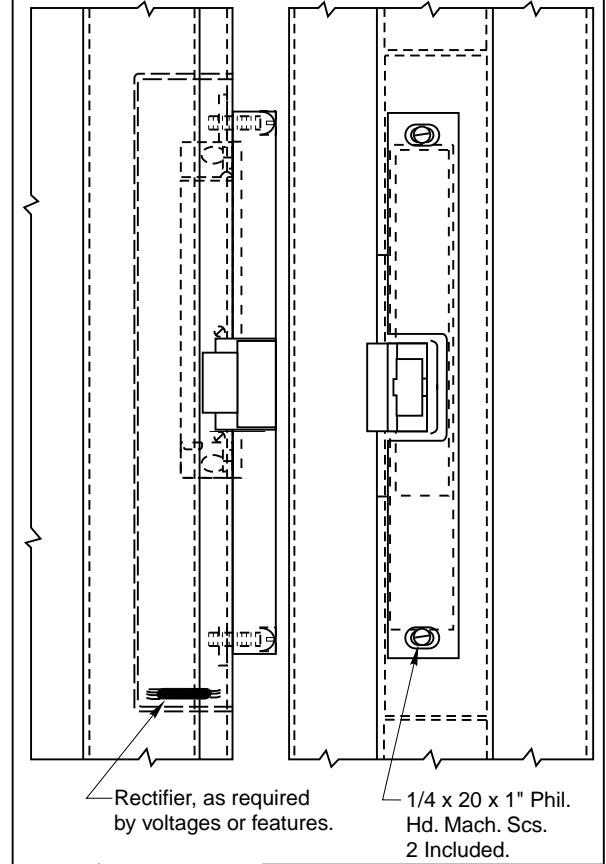
Measure distance from the mounting surface to tip of the bolt. This is Dim. X. Compare bolt shape to examples at left. Blunt bolt shapes, Dim. Y = Dim. X. Triangular bolt shapes, Dim. Y = Dim. X + 3/32. Dim. Y is from edge of stop to centerline of prep. Calculation assumes 3/32 (2.4) thick silencer bumper.

Model 310-4 Electric Strike



NOTES:

- DO NOT SCALE - All dimensions in inches (mm).
- Dimensions subject to change without notice.
- Number of wires will vary per features of strike.
- Cut off all excess wire not req'd for installation.
- Wires to be run from side & rear of strike to conduit connection.
- All wiring connections to be made at this end of strike. If a rectifier (optional) is used, it may be installed at either end of strike.
- Faceplate also available in thickness of 1/2 (13) & 9/16 (14.3).
- Refer to catalog for available finishes, voltages, & optional features.
- Door & frame manufacturers are responsible for providing adequate construction or reinforcements for proper installation of hardware.
- Tolerances shown are for cutouts.
- Dimension "A" (Keeper Position) is adjustable from .687 to .844. To adjust, loosen the two 12-24 Hex HD strike mounting bolts, reposition strike, and retighten bolts.
- Consult factory for information on Exit Device Backset.



310-4 Electric Strike

	REF. REPAIR PART DWG.
	245-4000-001
1902 Airport Road, MONROE NC 28110	
TEMPLATE NUMBER	DATE
092-0245-010	5-01